



*Designed for living, designed for life.*

Phone: (403) 527-0083 Fax: (403) 529-1736 #2-1311 Trans Canada Way S.E., Medicine Hat, AB T1B 1J1 Email: laceycon@canopycanada.net

# *"The Madison 6a"*



**Julia Lacey**

REALTOR®

(403) 594-4242

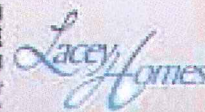
cell: (403) 497-4242 • toll-free: 1-877-528-4222

julialacey@royallepage.ca

**ROYAL LEPAGE**

Community Realty

Member of the Real Estate Board of Alberta



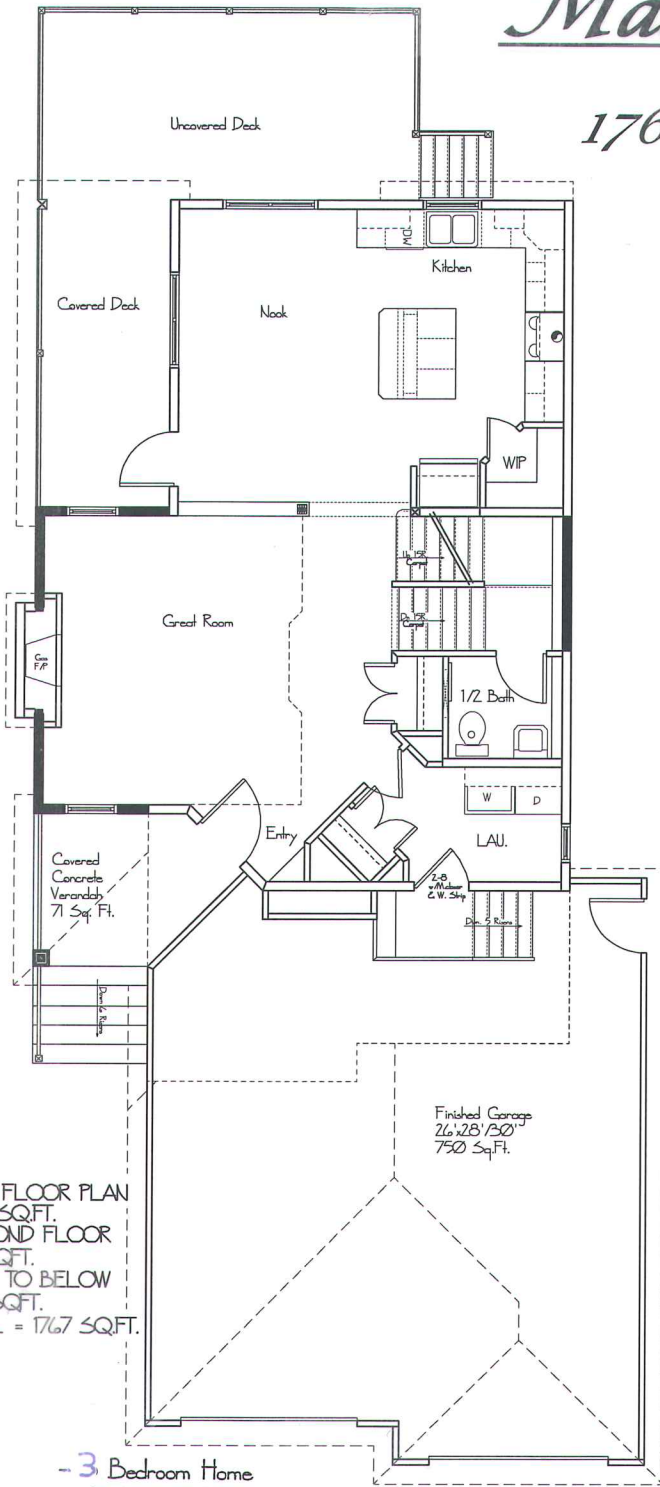
1202 Southview Dr. SE • Medicine Hat, AB T1B 4D9





# Madison 6a

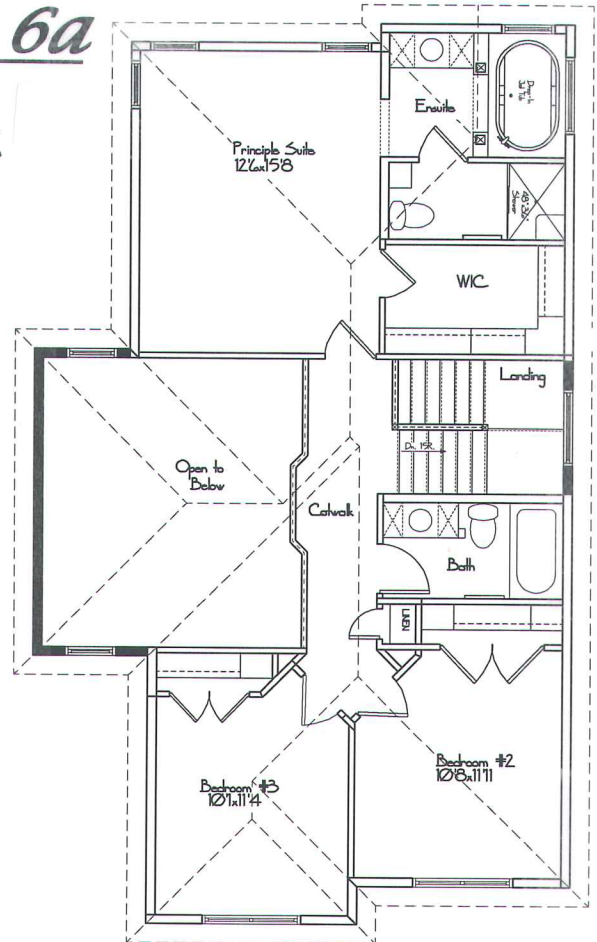
1767 SqFt.



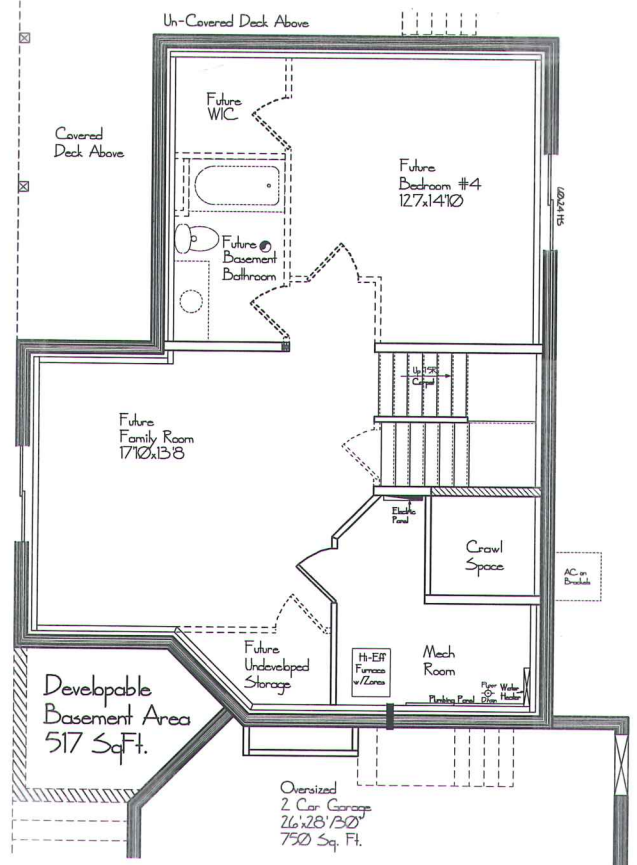
MAIN FLOOR PLAN  
856 SQ.FT.  
SECOND FLOOR  
911 SQ.FT.  
OPEN TO BELOW  
201 SQ.FT.  
TOTAL = 1767 SQ.FT.

- 3 Bedroom Home
- 2 Car Attached Garage
- Massive Deck off Side & Rear
- Beautiful Great Room w/ Gas Fireplace & Awe Inspiring Open to Above
- Large Open Kitchen/Nook w/ Walk-In Pantry
- Main Floor Laundry
- Unique 1/2 Bath on Landing Level
- Rear Principle Bedroom w/ Walk-In Closet & 4pc Elegant Ensuite
- Basement has a 4th Bedroom, Bathroom, & Rec Area for Optional Development

ALL PLANS, PRODUCT AND SPECIFICATIONS MAY BE SUBJECT TO CHANGE WITHOUT NOTICE. ELEVATIONS ARE ARTISTS IMPRESSION ONLY. ALL RIGHTS RESERVED INCLUDING THE RIGHTS OF REPRODUCTION ON WHOLE OR IN PART, IN ANY FORM WITHOUT PERMISSION OF THE BUILDER.



SECOND FLOOR PLAN  
911 Sq.Ft.  
OPEN TO BELOW  
201 Sq.Ft.



Developable  
Basement Area  
517 Sq.Ft.

Oversized  
2 Car Garage  
26'2"8" x 13'0" x  
750 Sq. Ft.