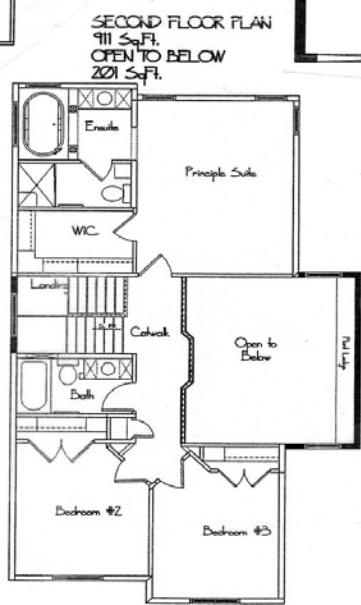
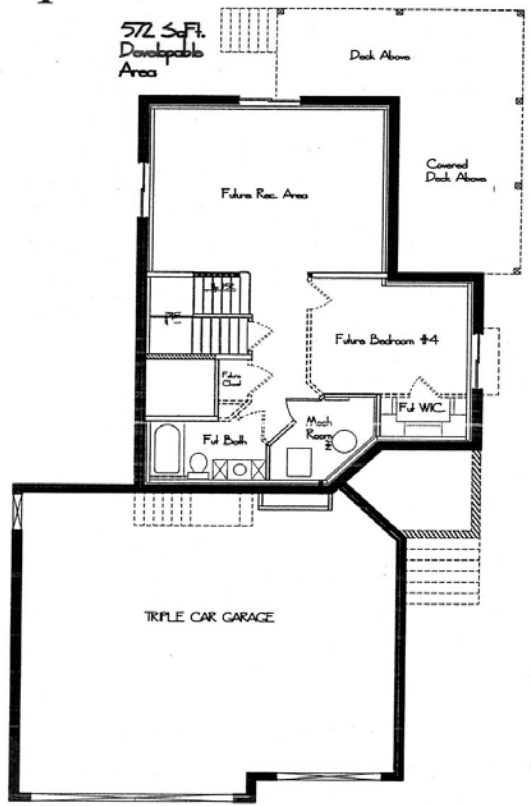
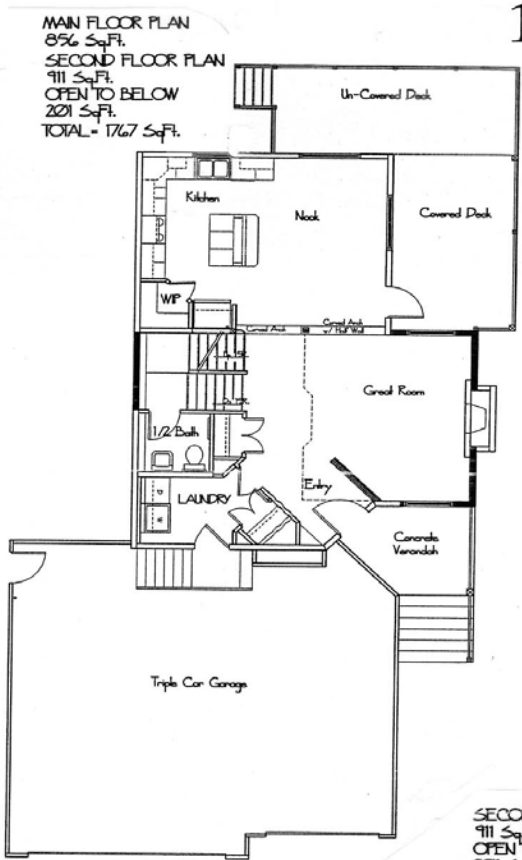




## The Madison 6

1767 Sq.Ft.



### Astonishing 2 Storey Home

- 3 Bedroom Home
- Triple Car Attached Garage
- Massive Deck off Side & Rear
- Beautiful Great Room w/ Gas Fireplace & Awe Inspiring Open to Above
- Large Open Kitchen/Nook w/ Walk-In Pantry
- Main Floor Laundry
- Unique 1/2 Bath on Landing Level
- Rear Principle Bedroom w/ Walk-In Closet & 4pc Elegant Ensuite
- Basement has a 4th Bedroom, Bathroom, & Rec Area for Optional Development

ALL PLANS, PRODUCT AND SPECIFICATIONS MAY BE SUBJECT TO CHANGE WITHOUT NOTICE. ELEVATIONS ARE ARTISTS IMPRESSION ONLY. ALL RIGHTS RESERVED INCLUDING THE RIGHTS OF RETRODUCTION ON WHOLE OR IN PART, IN ANY FORM WITHOUT PERMISSION OF THE BUILDER.