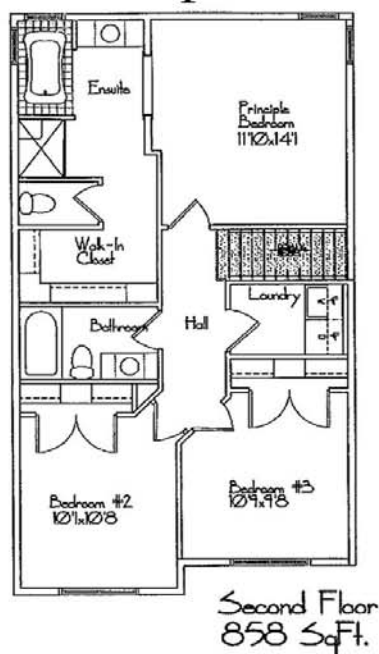
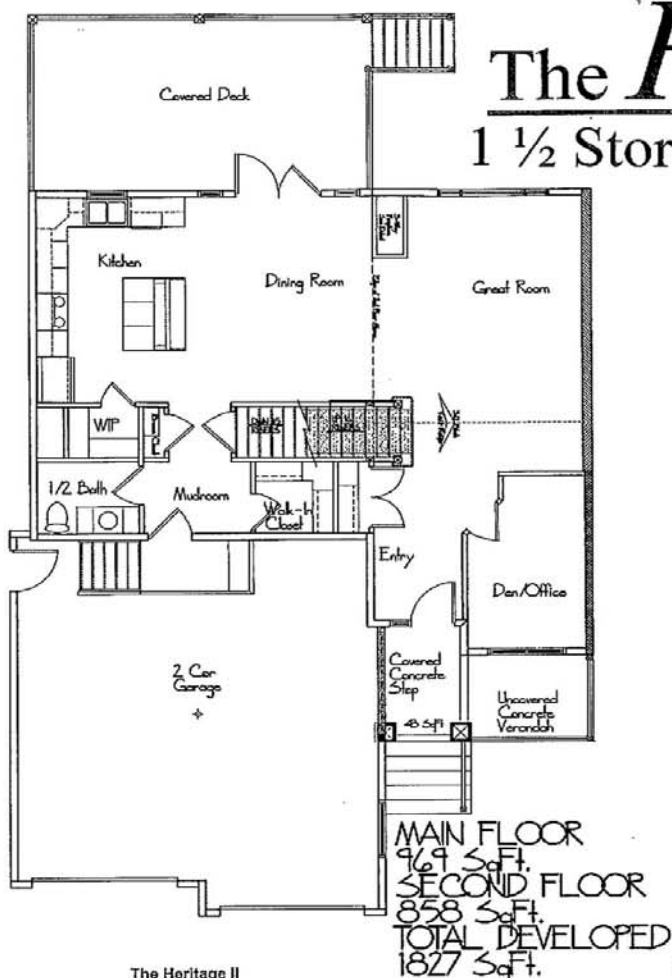


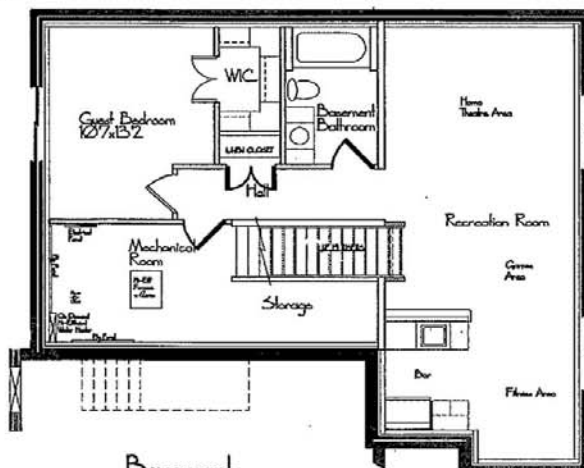


The Heritage II

1 1/2 Storey 1827 SqFt



- The Heritage II**
A wonderful New Home Design with some old World Charm.
- Covered Concrete Step with an Un-Covered Front Verandah
 - Vaulted Entry
 - Front Office
 - Large Vaulted Great Room with a 3 way Fireplace
 - Open Floor Concept with the Great Room, Dining Room and the Kitchen Swapping across the back end of the house.
 - The Grand, Country Style yet Modern Kitchen Provides for some Great Family Gatherings, and the Large Walk-In Pantry Provides for Excellent Kitchen Storage.
 - Garage Entry just off the Kitchen with a Spacious Walk-In Closet and a 1/2 Bath
 - Attached 2 Car Garage
 - Massive 22'x12' Covered Rear Deck Steps away from the kitchen out the Double Garden spots in the Dining Room
 - The 1/2 Storey Above is made up of 2 bedrooms, a Full Bathroom, Laundry, and Principle Suite.
 - The Grand Principle Suite on the 2nd Floor. The bedroom is 11'0"x14'. There is a huge Ensuite including a Drop In Jet Tub and a 4'x3' Matted Fiberglass Shower the Toilet is its own room. Off the Rear of the ensuite is a large Walk-In Closet



ALL PLANS, PRODUCT AND SPECIFICATIONS MAY BE SUBJECT TO CHANGE WITHOUT NOTICE. ELEVATIONS ARE ARTIST'S IMPRESSION ONLY. ALL RIGHTS RESERVED INCLUDING THE RIGHTS OF REPRODUCTION OR WHOLE OR IN PART, IN ANY FORM WITHOUT PERMISSION OF THE BUILDER.